

- 1
- 2
- 3
- 4
- 5
- 6
- 7
- 8
- 9
- 10
- 11
- 12
- 13
- 14
- 15
- 16
- 17
- 18

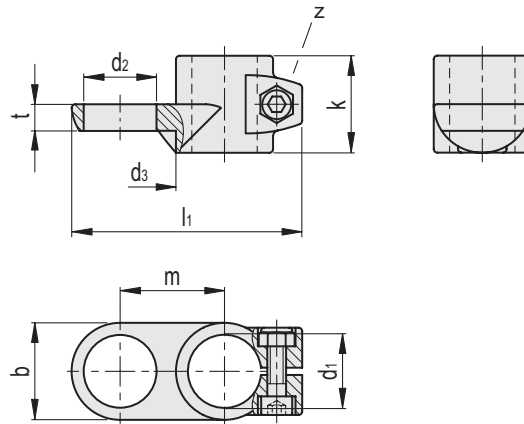
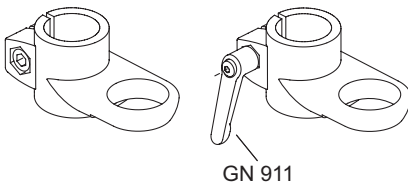
MAIN SPECIFICATIONS

- Aluminium
- Epoxy resin coating
- Black, RAL 9005, textured finish **SW**
- Socket cap screws DIN 912
- Stainless Steel AISI 304
- Hex nuts DIN 985
- Stainless Steel AISI 304
- Self-locking via polyamide ring

FEATURES AND APPLICATIONS

The clamping bore of sensor holders GN 274.4 is mechanically machined and designed for construction tubes GN 990 (see page). At the screw location **z**, the socket cap screw reduces the bore cross-section for clamping.

For clamping without tools, the socket cap screw can be replaced by an adjustable lever GN 911 (see page).



Conversion Table			
1 mm = 0,039 inch			
d1		d2	
mm	inch	mm	inch
20	0.78	18	0.70
25	0.98	30	1.17
30	1.17		

Code	Description	d1	d2	d3	b	k	l1	m	t	z	Clamping kit	△
GN.58851	GN 274.4-B20-B18-2-SW	B 20	B 18	50	40	40	95	43	10	M8-25	-	187
GN.58853	GN 274.4-B20-B30-2-SW	B 20	B 30	50	40	40	95	43	10	M8-25	-	183
GN.58861	GN 274.4-B25-B18-2-SW	B 25	B 18	50	40	40	95	43	10	M8-25	GN 911-63 / GN 911-78	169
GN.58863	GN 274.4-B25-B30-2-SW	B 25	B 30	50	40	40	95	43	10	M8-25	GN 911-63 / GN 911-78	164
GN.58871	GN 274.4-B30-B18-2-SW	B 30	B 18	50	40	40	95	43	10	M8-25	GN 911-63 / GN 911-78	145
GN.58873	GN 274.4-B30-B30-2-SW	B 30	B 30	50	40	40	95	43	10	M8-25	GN 911-63 / GN 911-78	140